

Creating New Opportunities, Facing New Challenges

Reconciliation of Family Life and Career for Young Academics

SLLS International Conference

'Life Courses in Cross-National Comparison: Similarities and Differences'

Dublin, Ireland

21 October 2015

Thorben Sembritzki & Ramona Schürmann

Content

1. WiNbus – A Panel for Young Academics
2. Model of Professional and Private Environment
3. Mixed-Methods: A Parallel Design
 - 3.1. Interview Study
 - 3.2. WiNbus-Panel
4. First Results from the WiNbus-Panel
5. Future use of data
6. References

1. WiNbus – A Panel for Young Academics

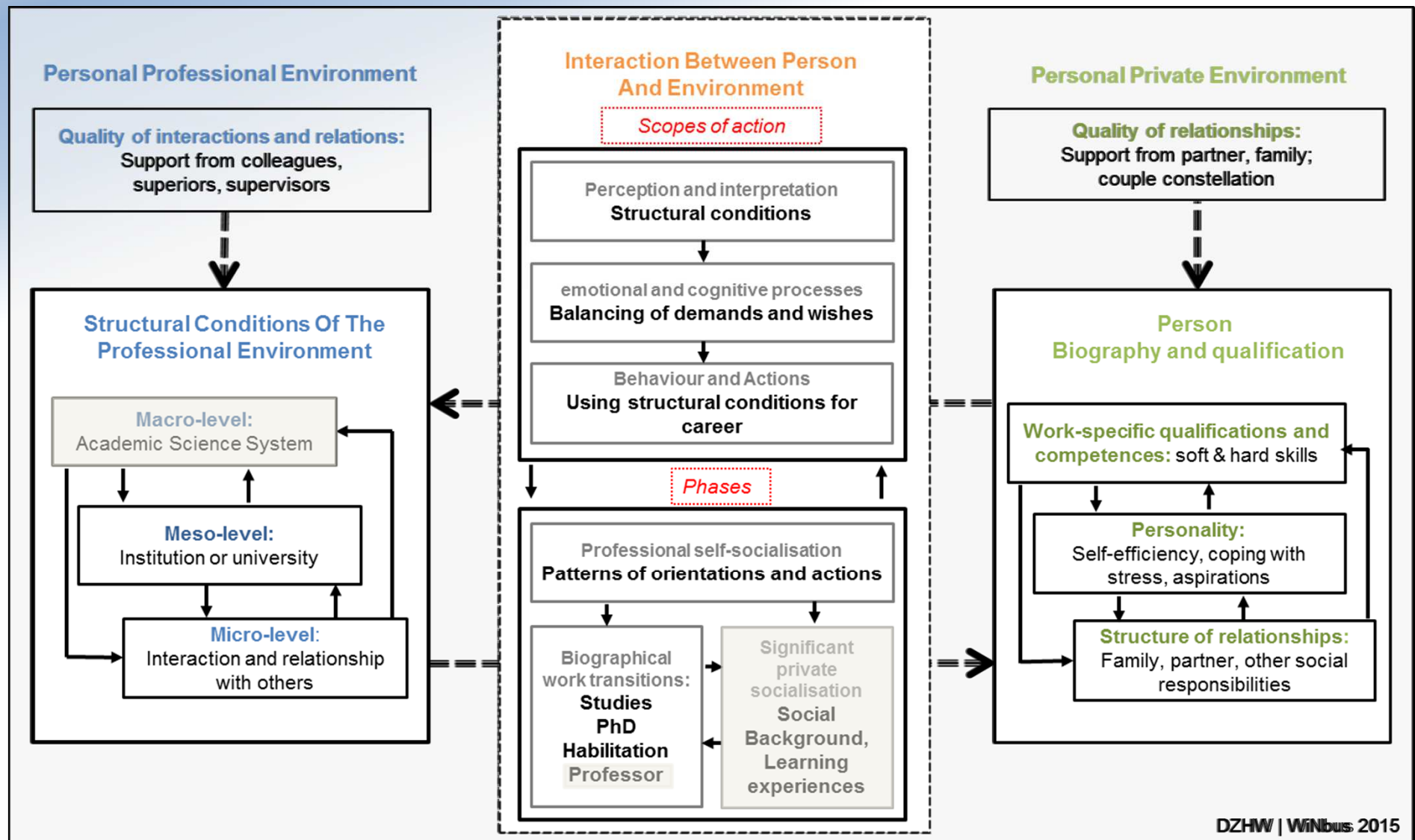
What ist WiNbus?

- WiNbus is an Online-Access-Panel for young academics in Germany
- Financed by the Federal Ministry of Education and Research

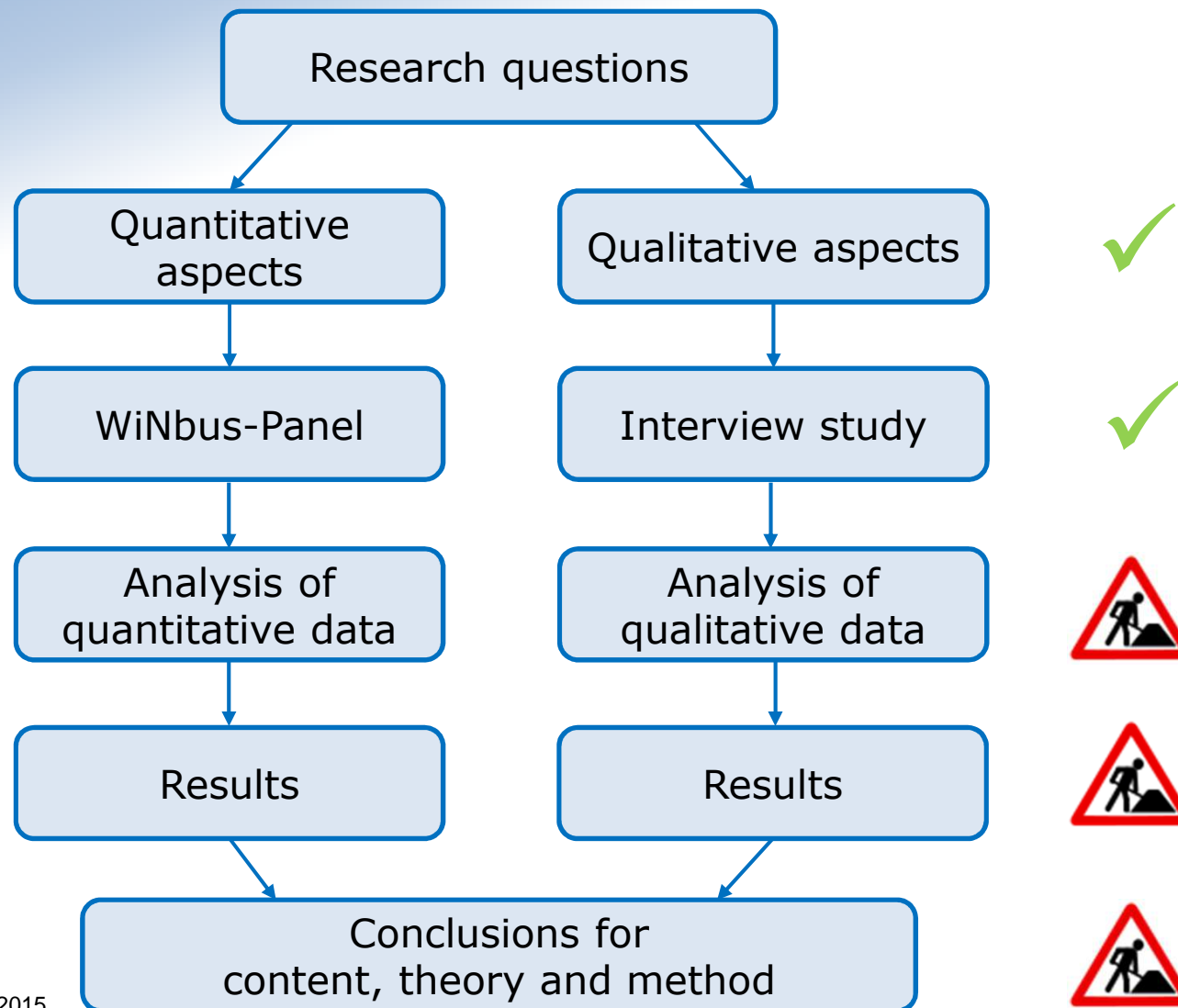
WiNbus offers...

- annual surveys and research reports with changing topics regarding science and higher education politics
- representative data about young academics in Germany

2. Model of Professional and Private Environment



3. Mixed-Methods: A Parallel Design



3.1. Interview Study: Sample

- 12 couple interviews
- Both partners with academic education
- At least one child (born in 2007 or later)
- Age: 25-45 years

	Both in Academic Sciences	One in Academic Sciences
Dual Career	5	1
Dual Earner	3	1
Traditional (male career)	/	1
Modern (female career)	/	1

DZHW | WiNbus 2015

3.2. WiNbus-Panel: Sample

	Sample and return rates of the survey	
	Survey Modus	
	Panel Survey	Survey of Universities
Gross-Sample	8.791	32.650
Net-Sample (minus undeliverable an wrong delivered emails)	7.322	30.768
Gross-return rates (referring questionnaires)	26% (1.914)	23% (7.005)
Net-return rates (only evaluable interviews)	1.478	4.798
Valued interviews (N=6061)	1.404	4.657
Including Research Institutes	326	329
DZHW WiNbus 2015		

4. First Results from the WiNbus-Panel

Description of the Sample		
	Male	Female
Gender	52%	48%
Age Ø	35	34
Ph.D.-status	49 % Ph.D.-students, 39 % Ph.D.s and 12 % neither nor	52 % Ph.D.-students 35 % Ph.D.s and 13 % neither nor
Altogether	N=6.061 ¹	

DZHW | WiNbus 2015

¹ Varies in dependence on missings

Parenthood

Parenthood		
	in %	obs.
Parents¹	42,6	2.561
Childless	57,4	3.451

DZHW | WiNbus 2015

¹ included couples who await a child

Marital Status

Marital Status		
	in %	obs.
Singles	15,9	971
Partnership with common household	66,7	4.005
Partnership with separated household	15,9	953
Divorced	1,4	78

DZHW | WiNbus 2015

Graduation of Partner

Graduation of Partner		
Academic Degree	82%	thereof 16 % with Ph.D.
Vocational training, Technician, High school graduation	15%	thereof 9,0 % with vocational training
Other	3%	thereof 2,7 % without degree
DZHW WiNbus 2015		

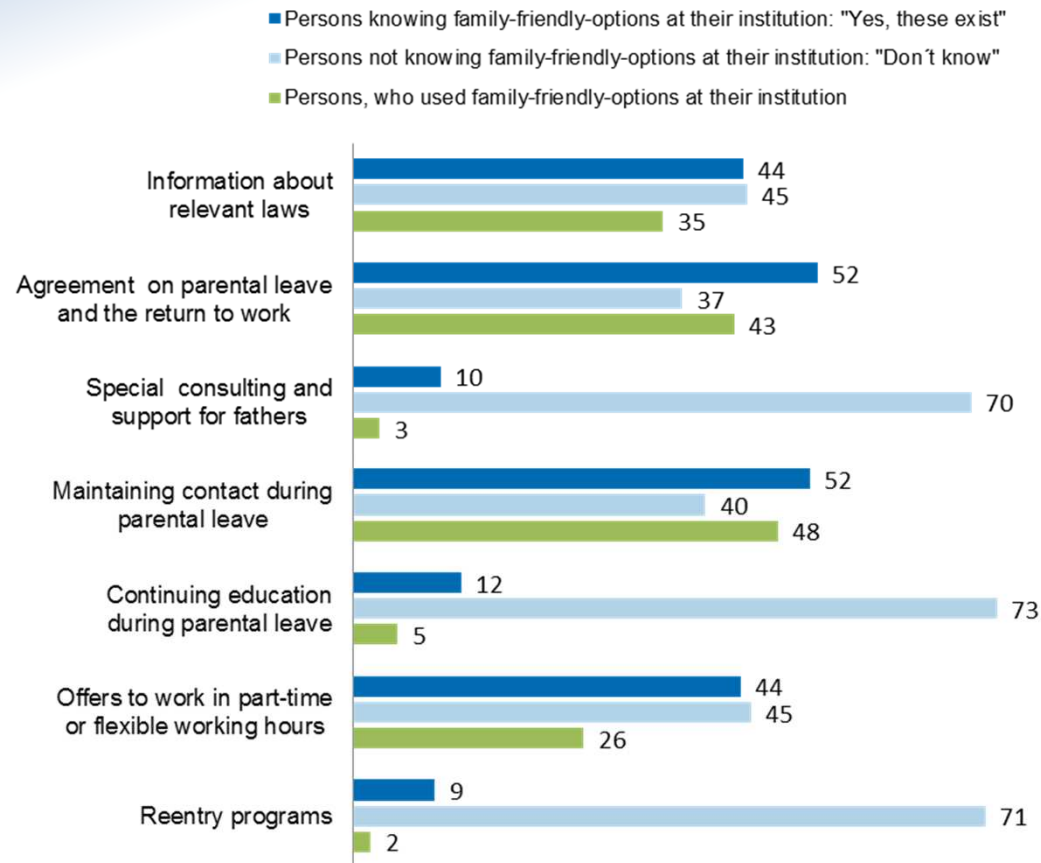
Partner's Occupation

Does your partner work at an institution of higher education?		
	in %	abs.
No, he/she works outside of Academia	63,7	2.182
Yes, as a Professor	2,2	79
Yes, in a mid-level faculty position (below a professorship)	26,3	900
Yes, as an assistant (student assistant, research assistant)	2,4	81
Yes, as other...	5,4	181
DZHW WiNbus 2015		

Family-Friendly Options (1/2)

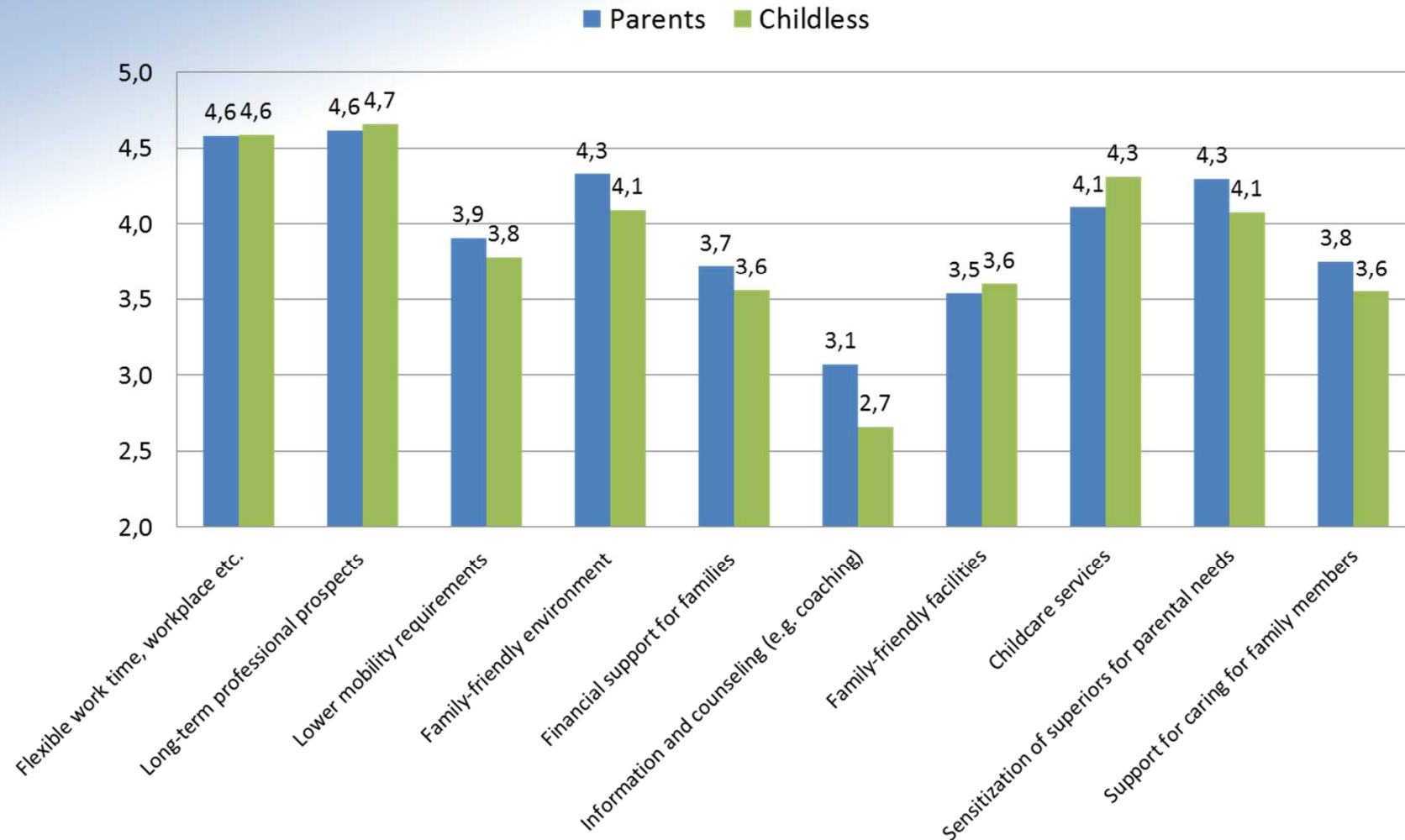
The following section deals with family-friendly options that are made available to staff members by your institution of higher education or research institute.

- 1) Please indicate to what extent the following options have been made available and*
- 2) to what extent you have made use of them. ("1=Yes", "2=No", "3=Don't know", in %)*



Family-Friendly Options (2/2)

Generally speaking, how important to you are the following options, which are designed to make it easier to reconcile work and family in academia? ("1=Very unimportant", "5=Very important", mean value)



5. Future Use of Data

- WiNbus-Report in March/April
- National Report on Young Academics (BuWiN 2017)
- Scientific-use-file will be available

Thank you for your attention!



References

Corbin, J. & Strauss, A. L. (1996). *Grounded Theory: Grundlagen qualitativer Sozialforschung*. Weinheim: Beltz/PsychologieVerlagsUnion.

Esser, H. (1999). *Soziologie. Spezielle Grundlagen. Band 1: Situationslogik und Handeln*. New York: Campus Verlag

Glaser, B. G. & Strauss, A. L. (1998). *Grounded Theory. Strategien qualitativer Forschung*. Bern: Verlag Hans Huber.

Heinz, W. R. (1991). Berufliche und betriebliche Sozialisation. In K. Hurrelmann, & D. Ulich (Hrsg.), *Neues Handbuch der Sozialisationsforschung* (S. 397-415). Weinheim

Heinz, W. R. (2001). Self-Socialization and Post-Traditional Society. In R. Settersten, Jr. & T. J. Owens (Hrsg.), *New Frontiers in Socialization*. Amsterdam

Lempert, W. (2006). *Berufliche Sozialisation. Persönlichkeitsentwicklung in der betrieblichen Ausbildung und Arbeit*. Baltmannsweiler: Schneider Verlag Hohengehren.

Witzel, A. & Reiter, H. (2012). *The Problem-centred Interview*. London.